

WHERE ARE WE:

705 Mangakaretu Road
KERIKERI

20 mins west of Kerikeri and 15kms from State Highway 10, heading north from the Kerikeri junction.



LONGVIEW SHORTHORNS



SALES 2016

LONGVIEW SHORTHORNS

Shane and Dot Dromgool

BAY OF ISLANDS, NZ

P: (09) 4019633 M: 021 0295 2030 or 021 181 2922

E: s.d.dromgool@actrix.co.nz

LONGVIEW SHORTHORNS

ON FARM BULLS FOR SALE - 2016

Paddock sales

We invite you to visit us in the Far North to view our selection of Beef Shorthorn bulls that have been farmed in a genuine commercial manner in Northland for over 65 years.

While Longview bred store cattle consistently top the Kaikohe sale, our bulls are guaranteed to move well into any other area of the country with clients nationwide able to confirm this.

With 225 active females, this is the largest registered Beef Shorthorn herd in NZ. This year we have 60 Bulls for sale; you are offered not only a good selection, you will also have the ability to select a team of bulls with the type of your choice.

As our sales are paddock sales (not an Auction), you have the peace of mind of knowing you're not going to blow your budget as you will know the price of each animal before you enter the paddock.

Look forward to seeing you in Northland

Shane and Dot Dromgool



105

51



003



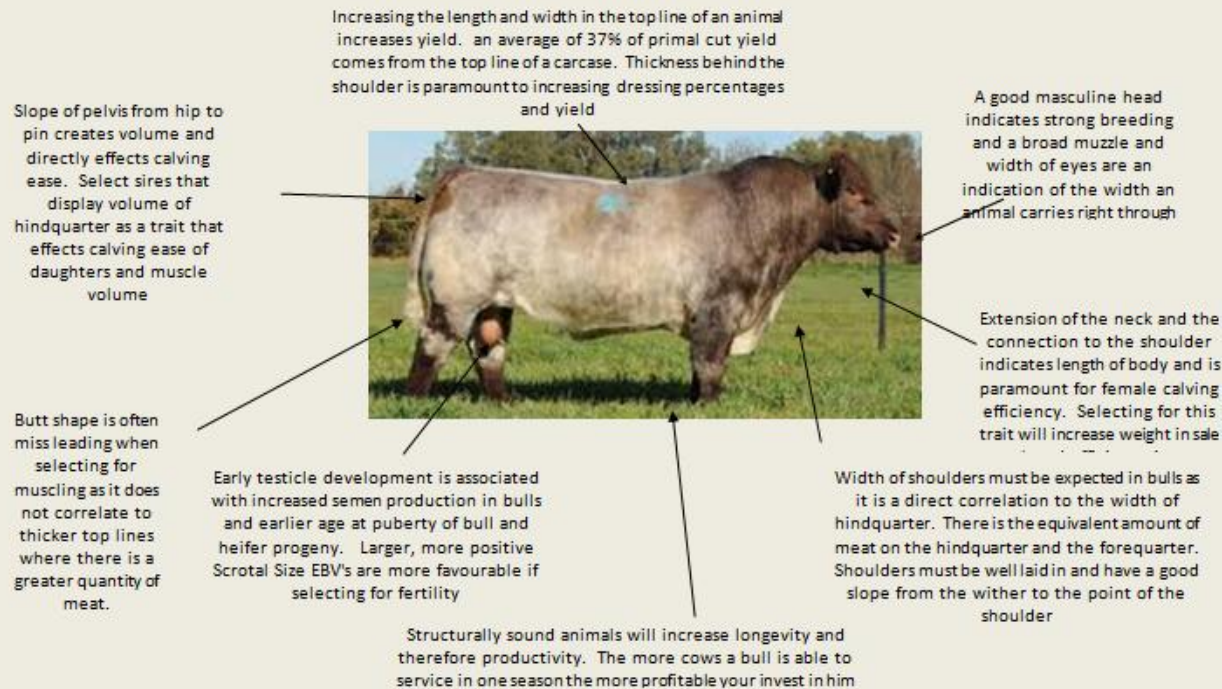
12



128

How Sire Selection Impacts Profitability

Successful Bull Selection....is an investment in the profitability of your herd for the next 15 years



"The purchase of a sire is a major investment, both financially and in terms of the genetic contribution he will have on your herd. A bull contributes 50% of his genetic material to each calf but the number of calves he sires dramatically increases the magnitude of a bull's contribution to your herd. The Beef CRC estimates that 80 to 85 percent of genetic improvement in a herd comes from bull selection. A bull kept for five years has the potential to sire anywhere from 100 to 300 calves with his female progeny being kept for anywhere up to 10 years. Therefore, a bull's direct influence on a beef enterprise would last 15 years"

LONGVIEW 232914051 White Born: 15/09/14

LONGVIEW 232914128 White Born: 06/10/14

Tahuna X Rattler 47 Roan
Tahuna Buttress 0541 Light Roan
Tahuna Mascot W16 Red/Roan
Sire: LONGVIEW 08582 Roan
Orena Taylor T52 Light Roan
Longview 01011 Red/Roan
Longview 97011 APX White

Austins Gus S70 Red/Roan
Glenrossie Gus 007 Roan
Glenrossie Duch Wortley P19 Roan
Dam: LONGVIEW 05039 Roan
Glenrossie Blotch Q7 Red
Longview 01002 Roan
Longview 98002 APX Roan

DIR	DTRS	GL	Birth	200 W	400W	600 W	Mat W	Milk
-4.5	-0.1	-0.5	+4.5	+26	+50	+71	+68	+3
45%	35%	39%	74%	69%	70%	72%	58%	46%
SS	DTC	CWT	EMA	Rib Fat	Rump	RBV	IMF	
+2	-0.3	+37	+3.1	-1.3	-1.1	+1.3	+0.4	
70%	38%	53%	53%	59%	59%	53%	42%	

Shorthorn Group Breed Averages for 2014 Born Calves

DIR	DTRS	GL	Birth	200W	400W	600W	Mat W	Milk	SS	DTC	CWT	EMA	Rib Fat	Rump	RBV	IMF
0.4	0.6	-1.5	3.1	26	36	48	42	6	1.4	-1	32	4.1	-0.5	-0.6	1	+5

Saskvalley Primo 40P (Can) Roan
Alta Cedar Samurai 46T (Can) Red
Alta Cedar Lilliam 88g Roan
Sire: LONGVIEW 11021 Roan
Tahuna X-Rattler 47 Roan
Longview 06041 Roan
Longview 03045 Roan

Austins Gus S70 Red/Roan
Glenrossie Gus 007 Roan
Glenrossie Duch Wortley P19 Roan
Dam: LONGVIEW 05036 Roan
Orena Taylor T52 Light Roan
Longview 03018 Red/Roan
Longview 99018 White

DIR	DTRS	GL	Birth	200 W	400W	600 W	Mat W	Milk
-4.6	-1.8	-1.3	+5.1	+33	+48	+72	+62	+7
39%	29%	41%	73%	66%	69%	71%	55%	37%
SS	DTC	CWT	EMA	Rib Fat	Rump	RBV	IMF	
+1.0	-0.3	+38	+4.1	-1.0	-1.3	+1.5	+0.1	
69%	37%	52%	50%	58%	58%	51%	40%	

Shorthorn Group Breed Averages for 2014 Born Calves

DIR	DTRS	GL	Birth	200W	400W	600W	Mat W	Milk	SS	DTC	CWT	EMA	Rib Fat	Rump	RBV	IMF
0.4	0.6	-1.5	3.1	26	36	48	42	6	1.4	-1	32	4.1	-0.5	-0.6	1	+5

LONGVIEW 232914003 White Born: 10/07/14

LONGVIEW 232914105 Roan Born:01/10/14

Saskvalley Primo 40P (Can) Roan
Alta Cedar Samurai 46T (Can) Red
Alta Cedar Lilliam 88g Roan

Sire: LONGVIEW 11021 Roan

Tahuna X-Rattler 47 Roan
Longview 06041 Roan
Longview 03045 Roan

Tahuna X-Rattler 47 Roan
Tahuna Butress 0541 Light Roan
Tahuna Mascot W16 Red/Roan

Dam: LONGVIEW 08588 White

Orena Taylor T52 Light Roan
Longview 01012 Red/Roan
Longview 98012 Red

DIR	DTRS	GL	Birth	200 W	400W	600 W	Mat W	Milk
-1.7	-0.7	-1.0	+3.8	+29	+37	+63	+45	+6
40%	30%	42%	71%	67%	70%	71%	56%	38%
SS	DTC	CWT	EMA	Rib Fat	Rump	RBV	IMF	
+1.8	-2.8	+33	+2.6	-0.6	-0.3	+1.2	+0.2	
69%	37%	53%	52%	60%	60%	54%	42%	

Shorthorn Group Breed Averages for 2014 Born Calves

DIR	DTRS	GL	Birth	200W	400W	600W	MatW	Milk	SS	DTC	CWT	EMA	Rib Fat	Rump	RBV	IMF
0.4	0.6	-1.5	3.1	26	36	48	42	6	1.4	-1	32	4.1	-0.5	-0.6	1	+5

Saskvalley Primo 40P (Can) Roan
Alta Cedar Samurai 46T (Can) Red
Alta Cedar Lilliam 88g Roan

Sire: LONGVIEW 11021 Roan

Tahuna X-Rattler 47 Roan
Longview 06041 Roan
Longview 03045 Roan

Tahuna X-Rattler 47 Roan
Tahuna Butress 0541 Light Roan
Tahuna Mascot W16 Red/Roan

Dam: LONGVIEW 0959 Roan

Glenrossie Prophet 01043 Roan
Longview 04050 Roan
Longview 01012 Red/White

DIR	DTRS	GL	Birth	200 W	400W	600 W	Mat W	Milk
-3.3	-1.9	-0.9	+4.3	+31	+41	+61	+50	+7
40%	29%	41%	74%	67%	70%	72%	57%	34%
SS	DTC	CWT	EMA	Rib Fat	Rump	RBV	IMF	
+2.0	-2.3	+32	+2.3	-1.3	-1.6	+1.1	+0.4	
69%	38%	53%	53%	61%	61%	54%	42%	

Shorthorn Group Breed Averages for 2014 Born Calves

DIR	DTRS	GL	Birth	200W	400W	600W	MatW	Milk	SS	DTC	CWT	EMA	Rib Fat	Rump	RBV	IMF
0.4	0.6	-1.5	3.1	26	36	48	42	6	1.4	-1	32	4.1	-0.5	-0.6	1	+5

LONGVIEW 232914125 White Born: 05/10/14

LONGVIEW 232914098 Roan Born: 26/09/14

Saskvalley Primo 40P (Can) Roan
Alta Cedar Samurai 46T (Can) Red
Alta Cedar Lilliam 88g Roan

Sire: LONGVIEW 11021 Roan

Tahuna X-Rattler 47 Roan
Longview 06041 Roan
Longview 03045 Roan

Tahuna X-Rattler 47 Roan
Tahuna Butress 0541 Light Roan
Tahuna Mascot W16 Red/Roan

Dam: LONGVIEW 08571 Roan

Glenrossie Blotch 07 Red
Longview 05035 Roan
Longview 03035 Roan

DIR	DTRS	GL	Birth	200 W	400W	600 W	Mat W	Milk
-2.3	-1.3	-0.9	+3.9	+30	+40	+62	+48	+5
40%	29%	41%	73%	66%	67%	68%	55%	38%
SS	DTC	CWT	EMA	Rib Fat	Rump	RBY	IMF	
+1.2	-1.7	+34	+3.1	-0.2	+0.3	+0.9	+0.4	
64%	36%	50%	50%	56%	57%	50%	40%	

Shorthorn Group Breed Averages for 2014 Born Calves

DIR	DTRS	GL	Birth	200W	400W	600W	MatW	Milk	SS	DTC	CWT	EMA	Rib Fat	Rump	RBY	IMF
0.4	0.6	-1.5	3.1	26	36	48	42	6	1.4	-1	32	4.1	-0.5	-0.6	1	+5

Saskvalley Primo 40P (Can) Roan
Alta Cedar Samurai 46T (Can) Red
Alta Cedar Lilliam 88g Roan

Sire: LONGVIEW 11021 Roan

Tahuna X-Rattler 47 Roan
Longview 06041 Roan
Longview 03045 Roan

Tahuna X-Rattler 47 Roan
Tahuna Butress 0541 Light Roan
Tahuna Mascot W16 Red/Roan

Dam: LONGVIEW 0930 Roan

Orena Taylor T52 Light Roan
Longview 02007 Red
Longview 99007 Roan

DIR	DTRS	GL	Birth	200 W	400W	600 W	Mat W	Milk
-5.6	-2.6	-0.8	+4.8	+31	+40	+64	+51	+6
40%	29%	40%	72%	61%	62%	60%	52%	36%
SS	DTC	CWT	EMA	Rib Fat	Rump	RBY	IMF	
+1.5	-1.8	+32	+2.7	+0.4	0.0	+0.7	+0.5	
49%	30%	44%	44%	48%	48%	43%		

Shorthorn Group Breed Averages for 2014 Born Calves

DIR	DTRS	GL	Birth	200W	400W	600W	MatW	Milk	SS	DTC	CWT	EMA	Rib Fat	Rump	RBY	IMF
0.4	0.6	-1.5	3.1	26	36	48	42	6	1.4	-1	32	4.1	-0.5	-0.6	1	+5

LONGVIEW 232914012 Red/Roan Born:01/09/14

LONGVIEW 232914009 Red/Roan Born: 30/08/14

Tahuna X-Rattler 47 Roan
Tahuna Butress 05 41 Light Roan
Tahuna Mascot W16 Red/Roan
Sire: LONGVIEW 08582 Roan
Orena Taylor T52 Light Roan
Longview 01011 Red/Roan
Longview 97011 White

Glenrossie Gus 0028 Red/Little White
Glenrossie Gus 04017 Red/Little White
Glenrossie Buttercup U49 Roan
Dam: LONGVIEW Betty
Orena Taylor T52 Light Roan
Longview 01008 Roan
Longview 98008 Red/Roan

DIR	DTRS	GL	Birth	200 W	400W	600 W	Mat W	Milk
-5.3	-0.6	-0.2	+4.9	+29	+41	+62	+63	+2
45%	36%	38%	75%	70%	71%	72%	59%	47%
SS	DTC	CWT	EMA	Rib Fat	Rump	RBV	IMF	
+1.1	-0.4	+31	+2.6	-1.5	-1.7	+0.9	+0.4	
70%	39%	55%	55%	62%	61%	55%	44%	

Shorthorn Group Breed Averages for 2014 Born Calves

DIR	DTRS	GL	Birth	200W	400W	600W	MatW	Milk	SS	DTC	CWT	EMA	Rib Fat	Rump	ggy	IMF
0.4	0.6	-1.5	3.1	26	36	48	42	6	1.4	-1	32	4.1	-0.5	-0.6	1	+5

Alta Cedar Prairie Storm 47R Red
Alta Cedar Perfect Storm 11U (Imp Can) Roan
Alta Cedar Silver Maisie 59S Roan
Sire: LONGVIEW 11031 Roan
Glenrossie Gus 007 Roan
Longview 03072 Roan
Longview 00016 Red/Roan

Saskvalley Primo 40P (Imp Can) Roan
Alta Cedar Samurai 46T (Imp Can) Red
Alta Cedar Lillian 88G Roan
Dam: LONGVIEW 11008 Roan
Glenrossie Prophet 01043 Roan
Longview 05040 Red/Roan
Longview 99005 Red/Little White

DIR	DTRS	GL	Birth	200 W	400W	600 W	Mat W	Milk
-4.4	-0.5	-2.9	+4.5	+32	+54	+62	+63	+7
37%	26%	48%	72%	65%	67%	70%	54%	32%
SS	DTC	CWT	EMA	Rib Fat	Rump	RBV	IMF	
+1.1	-0.7	+38	+4.6	-1.8	-3.0	+2.0	+0.1	
48%	29%	50%	42%	46%	46%	41%	34%	

Shorthorn Group Breed Averages for 2014 Born Calves

DIR	DTRS	GL	Birth	200W	400W	600W	MatW	Milk	SS	DTC	CWT	EMA	Rib Fat	Rump	ggy	IMF
0.4	0.6	-1.5	3.1	26	36	48	42	6	1.4	-1	32	4.1	-0.5	-0.6	1	+5

LONGVIEW 232914114 White Born:02/10/14

Saskvalley Primo 40P (Can) Roan
Alta Cedar Samurai 46T (Can) Red
Alta Cedar Lilliam 88g Roan
Sire: LONGVIEW 11021 Roan
Tahuna X-Rattler 47 Roan
Longview 06041 Roan
Longview 03045 Roan

Tahuna X-Rattler 47 Roan
Tahuna Butress 05 41 Light Roan
Tahuna Mascot W16 Red/Roan
Dam: LONGVIEW 09002 White
Glerossie Triton U38 Roan
Longview 03078 White

DIR	DTRS	GL	Birth	200 W	400W	600 W	Mat W	Milk
-0.6	+0.5	-1.0	+3.1	+29	+38	+55	+47	+8
39%	28%	40%	73%	67%	69%	71%	56%	35%
SS	DTC	CWT	EMA	Rib Fat	Rump	RBY	IMF	
+1.2	-2.8	+30	+1.6	-0.6	-0.1	+0.7	+0.2	
50%	30%	52%	445	48%	48%	44%	36%	

Shorthorn Group Breed Averages for 2014 Born Calves

DIR	DTRS	GL	Birth	200W	400W	600W	MatW	Milk	SS	DTC	CWT	EMA	Rib Fat	Rump	BBY	IMF
0.4	0.6	-1.5	3.1	26	36	48	42	6	1.4	-1	32	4.1	-0.5	-0.6	1	+5

LONGVIEW 232914120 White Born:04/10/14

Saskvalley Primo 40P (Can) Roan
Alta Cedar Samurai 46T (Can) Red
Alta Cedar Lilliam 88g Roan
Sire: LONGVIEW 11021 Roan
Tahuna X-Rattler 47 Roan
Longview 06041 Roan
Longview 03045 Roan

Bayview Advantage (Imp Aus) Red
Orena Taylor T52 Light Roan
Aonga Fancy P7 Roan
Dam: LONGVIEW 05022 White
Hinewaka Dazzler P63 White
Longview 99014 Light Roan
Longview 95014 Roan

DIR	DTRS	GL	Birth	200 W	400W	600 W	Mat W	Milk
-0.8	+0.2	-0.8	+3.6	+28	+34	+58	+44	+7
40%	30%	43%	73%	67%	69%	71%	56%	39%
SS	DTC	CWT	EMA	Rib Fat	Rump	RBY	IMF	
+1.5	-1.6	+31	+2.3	-1.1	-1.2	+1.2	+0.2	
70%	38%	52%	51%	59%	59%	53%	40%	

Shorthorn Group Breed Averages for 2014 Born Calves

DIR	DTRS	GL	Birth	200W	400W	600W	MatW	Milk	SS	DTC	CWT	EMA	Rib Fat	Rump	BBY	IMF
0.4	0.6	-1.5	3.1	26	36	48	42	6	1.4	-1	32	4.1	-0.5	-0.6	1	+5

LONGVIEW 232914136 Roan Born:09/10/14

Alta Cedar Prairie Storm 47R Red
Alta Cedar Perfect Storm 11U (Imp Can) Roan
Alta Cedar Silver Maisie 59S Roan

Sire: LONGVIEW 11031 Roan

Glenrossie Gus 007 Roan
Longview 03072 Roan
Longview 00016 Red/Roan

Saskvalley Primo 40P (Imp Can) Roan
Alta Cedar Samurai 46T (Imp Can) Red
Alta Cedar Lillian 88G Roan

Dam: LONGVIEW 11020 Roan

Glenrossie Blotch Q7 Red
Longview Blotch Amanda White
Longview 00026 White

DIR	DTRS	GL	Birth	200 W	400W	600 W	Mat W	Milk
-4.5	-1.5	-1.8	+3.9	+29	+47	+52	+50	+5
37%	26%	48%	73%	67%	69%	71%	55%	32%
SS	DTC	CWT	EMA	Rib Fat	Rump	RBY	IMF	
+0.9	-0.4	+35	+6.3	-0.9	-1.9	+2.0	+0.3	
68%	36%	51%	50%	59%	59%	52%	39%	

Shorthorn Group Breed Averages for 2014 Born Calves

DIR	DTRS	GL	Birth	200W	400W	600W	MatW	Milk	SS	DTC	CWT	EMA	Rib Fat	Rump	avg	IMF
0.4	0.6	-1.5	3.1	26	36	48	42	6	1.4	-1	32	4.1	-0.5	-0.6	1	+5

LONGVIEW 232914072 White Born:20/09/14

Saskvalley Primo 40P (Can) Roan
Alta Cedar Samurai 46T (Can) Red
Alta Cedar Lilliam 88g Roan

Sire: LONGVIEW 11021 Roan

Tahuna X-Rattler 47 Roan
Longview 06041 Roan
Longview 03045 Roan

Tahuna X-Rattler 47 Roan
Tahuna Butress 05 41 Light Roan
Tahuna Mascot W16 Red/Roan

Dam: LONGVIEW 09060 Red

Glerossie Prophet 01043 Roan
Longview 04073 Roan
Longview 00013

DIR	DTRS	GL	Birth	200 W	400W	600 W	Mat W	Milk
-0.2	+0.4	-1.0	+2.7	+25	+30	+47	+38	+5
40%	29%	41%	73%	68%	69%	71%	56%	36%
SS	DTC	CWT	EMA	Rib Fat	Rump	RBY	IMF	
+0.9	-2.0	+27	+2.8	-0.2	+0.4	+0.8	+0.2	
67%	37%	52%	52%	60%	59%	53%	42%	

Shorthorn Group Breed Averages for 2014 Born Calves

DIR	DTRS	GL	Birth	200W	400W	600W	MatW	Milk	SS	DTC	CWT	EMA	Rib Fat	Rump	avg	IMF
0.4	0.6	-1.5	3.1	26	36	48	42	6	1.4	-1	32	4.1	-0.5	-0.6	1	+5

LONGVIEW 232914085 Red Born:23/09/14

LONGVIEW 232914060 Red Born:16/09/14

Tahuna X-Rattler 47 Roan
Tahuna Butress 05 41 Light Roan
Tahuna Mascot W16 Red/Roan

Sire: LONGVIEW 08582
Roan

Orena Taylor T52 Light Roan
Longview 01011 Red/Roan
Longview 97011 White

Belmore Blotch 22 (Imp Aus) Roan
Glenrossie Blotch Q7 Red
Glenrossie Brenda L25 Red

Dam: LONGVIEW 02076 Red

DIR	DTRS	GL	Birth	200 W	400W	600 W	Mat W	Milk
-4.5	-2.8	-0.6	+3.9	+27	+39	+53	+48	+2
45%	36%	34%	74%	69%	70%	71%	57%	46%
SS	DTC	CWT	EMA	Rib Fat	Rump	RBY	IMF	
+0.9	+0.5	+32	+3.9	-1.2	-1.8	+1.4	+0.5	
69%	37%	53%	53%	60%	59%	53%	42%	

Shorthorn Group Breed Averages for 2014 Born Calves

DIR	DTRS	GL	Birth	200W	400W	600W	MatW	Milk	SS	DTC	CWT	EMA	Rib Fat	Rump	RBY	IMF
0.4	0.6	-1.5	3.1	26	36	48	42	6	1.4	-1	32	4.1	-0.5	-0.6	1	+5

Saskvalley Primo 40P (Can) Roan
Alta Cedar Samurai 46T (Can) Red
Alta Cedar Lilliam 88g Roan

Sire: LONGVIEW 11021 Roan

Tahuna X-Rattler 47 Roan
Longview 06041 Roan
Longview 03045 Roan

Glenrossie Gus 0028 Red/Little White
Glenrossie Gus 04017 Red/Little White
Glenrossie Buttercup U49 Roan

Dam: LONGVIEW Beyonce

Glenrossie Blotch Q7 Red
Longview 02015
Longview 96015 Red/Roan

DIR	DTRS	GL	Birth	200 W	400W	600 W	Mat W	Milk
-1.0	+2.9	-1.9	+3.2	+26	+36	+52	+44	+5
38%	28%	42%	73%	655	69%	63%	54%	34%
SS	DTC	CWT	EMA	Rib Fat	Rump	RBY	IMF	
+1.4	-2.2	+32	+4.1	-0.7	-0.8	+1.3	+0.3	
68%	365	48%	51%	59%	59%	52%	39%	

Shorthorn Group Breed Averages for 2014 Born Calves

DIR	DTRS	GL	Birth	200W	400W	600W	MatW	Milk	SS	DTC	CWT	EMA	Rib Fat	Rump	RBY	IMF
0.4	0.6	-1.5	3.1	26	36	48	42	6	1.4	-1	32	4.1	-0.5	-0.6	1	+5

LONGVIEW 232914025 Roan Born:07/09/14

LONGVIEW 232914022 Roan Born:05/09/14

Saskvalley Primo 40P (Can) Roan
Alta Cedar Samurai 46T (Can) Red
Alta Cedar Lilliam 88g Roan

Sire: LONGVIEW 11021 Roan

Tahuna X-Rattler 47 Roan
Longview 06041 Roan
Longview 03045 Roan

Eden Park Red Rattler V0001 (Imp
Aus) Red
Tahuna X-Rattler 47 Roan

Dam: LONGVIEW 06062 Roan
Tahuna Cliff Mascot N16 Light Roan

Glenrossie Gus 007 Roan
Longview 03072 Roan
Longview 00016 Red/Roan

DIR	DTRS	GL	Birth	200 W	400W	600 W	Mat W	Milk
-5.5	-2.1	-1.1	+4.0	+31	+40	+53	+41	+6
42%	31%	43%	74%	68%	70%	72%	57%	40%
SS	DTC	CWT	EMA	Rib Fat	Rump	RBY	IMF	
+1.9	-1.9	+31	+3.1	-1.1	-1.6	+1.4	0.3	
70%	39%	535	52%	60%	59%	53%	41%	

Shorthorn Group Breed Averages for 2014 Born Calves

DIR	DTRS	GL	Birth	200W	400W	600W	MatW	Milk	SS	DTC	CWT	EMA	Rib Fat	Rump	RBY	IMF
0.4	0.6	-1.5	3.1	26	36	48	42	6	1.4	-1	32	4.1	-0.5	-0.6	1	+5

Saskvalley Ultra 12J Roan
Saskvalley Primo 40P (Imp Can) Roan
Saskvalley Patsy 250M Red

Sire: LONGVIEW 10019 White

Glenrossie Prophet 01043 Roan
Longview 04048 Roan
Longview 00016 Red/Roan

Tahuna X-Rattler 47 Roan
Tahuna butress 05041 Light Roan
Tahuna Mascot W16 Red/Roan

Dam: LONGVIEW 09026 Roan

Orena Taylor T52 Light Roan
Longview 01008 Roan
Longview 98008 Red/Roan

DIR	DTRS	GL	Birth	200 W	400W	600 W	Mat W	Milk
-3.4	+0.9	-0.7	+4.3	+30	+39	+52	+47	+6
42%	33%	42%	74%	68%	70%	71%	57%	40%
SS	DTC	CWT	EMA	Rib Fat	Rump	RBY	IMF	
+0.7	+0.7	+29	+3.3	-1.2	-1.9	+1.3	+0.3	
39%	53%	53%	60%	60%	60%	54%	43%	

Shorthorn Group Breed Averages for 2014 Born Calves

DIR	DTRS	GL	Birth	200W	400W	600W	MatW	Milk	SS	DTC	CWT	EMA	Rib Fat	Rump	RBY	IMF
0.4	0.6	-1.5	3.1	26	36	48	42	6	1.4	-1	32	4.1	-0.5	-0.6	1	+5

LONGVIEW 232914027 White Born:07/09/14

LONGVIEW 232914042 Roan Born:13/09/14

Tahuna X-Rattler 47 Roan
Tahuna Butress 05 41 Light Roan
Tahuna Mascot W16 Red/Roan

Sire: LONGVIEW 08582 Roan

Orena Taylor T52 Light Roan
Longview 01011 Red/Roan
Longview 97011 White

Flockton Triton P39 Red/Little White
Glenrossie Triton U38 Roan
Glenrossie Heather Q11 Roan

Dam: LONGVIEW 05080

DIR	DTRS	GL	Birth	200 W	400W	600 W	Mat W	Milk
-3.7	-1.2	+0.3	+3.8	+24	+33	+50	+45	+6
42%	32%	35%	73%	68%	69%	71%	56%	45%
SS	DTC	CWT	EMA	Rib Fat	Rump	RBV	IMF	
+0.7	+0.5	+29	+2.7	-1.1	-1.1	+1.3	+0.3	
69%	37%	52%	51%	58%	58%	52%	41%	

Shorthorn Group Breed Averages for 2014 Born Calves

DIR	DTRS	GL	Birth	200W	400W	600W	MatW	Milk	SS	DTC	CWT	EMA	Rib Fat	Rump	RBV	IMF
0.4	0.6	-1.5	3.1	26	36	48	42	6	1.4	-1	32	4.1	-0.5	-0.6	1	+5

Tahuna X-Rattler 47 Roan
Tahuna Butress 05 41 Light Roan
Tahuna Mascot W16 Red/Roan

Sire: LONGVIEW 08582 Roan

Orena Taylor T52 Light Roan
Longview 01011 Red/Roan
Longview 97011 White

Glenrossie Gus 0028 Red/Little White
Glenrossie Gus 04017 Red/Little White
Glenrossie Buttercup U49 Roan

Dam: LONGVIEW Bella

Hinewaka Dazzler P63 White
Longview 99010 Light Roan
Longview 95010 Roan

DIR	DTRS	GL	Birth	200 W	400W	600 W	Mat W	Milk
-2.3	+1.3	-0.5	+3.1	+24	+34	+52	+48	+4
44%	35%	37	74%	70%	71%	72%	58%	44%
SS	DTC	CWT	EMA	Rib Fat	Rump	RBV	IMF	
+1.8	-3.3	+29	+2.7	-0.2	+0.7	+0.5	+0.6	
70%	39%	54%	54%	61%	61%	55%	44%	

Shorthorn Group Breed Averages for 2014 Born Calves

DIR	DTRS	GL	Birth	200W	400W	600W	MatW	Milk	SS	DTC	CWT	EMA	Rib Fat	Rump	RBV	IMF
0.4	0.6	-1.5	3.1	26	36	48	42	6	1.4	-1	32	4.1	-0.5	-0.6	1	+5

LONGVIEW 232914117 White Born:03/10/14

LONGVIEW 232914019 white Born:04/09/14

Saskvalley Primo 40P (Can) Roan
Alta Cedar Samurai 46T (Can) Red
Alta Cedar Lilliam 88g Roan

Sire: LONGVIEW 11021 Roan

Tahuna X-Rattler 47 Roan
Longview 06041 Roan
Longview 03045 Roan

Tahuna X-Rattler 47 Roan
Tahuna Butress 05041 Light Roan
Tahuna Mascot W16 Red/Roan

Dam: LONGVIEW 10039 Roan

Glenrossie Gus 04017 Red/L White
Longview 03072 Roan
Longview 01008 Roan

DIR	DTRS	GL	Birth	200 W	400W	600 W	Mat W	Milk
-0.2	+0.5	-1.0	+3.0	+26	+28	+51	+42	+5
40%	29%	41%	74%	68%	70%	72%	57%	37%
SS	DTC	CWT	EMA	Rib Fat	Rump	RBV	IMF	
+0.7	-1.1	+28	+2.1	-0.4	-0.2	-0.8	+0.2	
69%	38%	53%	53%	61%	61%	54%	42%	

Shorthorn Group Breed Averages for 2014 Born Calves

DIR	DTRS	GL	Birth	200W	400W	600W	MatW	Milk	SS	DTC	CWT	EMA	Rib Fat	Rump	RBV	IMF
0.4	0.6	-1.5	3.1	26	36	48	42	6	1.4	-1	32	4.1	-0.5	-0.6	1	+5

Tahuna X-Rattler 47 Roan
Tahuna Butress 05 41 Light Roan
Tahuna Mascot W16 Red/Roan

Sire: LONGVIEW 08582 Roan

Orena Taylor T52 Light Roan
Longview 01011 Red/Roan
Longview 97011 White

Weebollabolla Theodor T85 (Aus)Roan
Browns BG Tehodore 052 Red/Roan
Browns Bonny Glory Red/L White

Dam: LONGVIEW 09054

Glenrossie Gus 04017 Red/L White
Longview Bess
Longview 00016 Red/Roan

DIR	DTRS	GL	Birth	200 W	400W	600 W	Mat W	Milk
-1.6	-0.2	-0.5	+3.4	+24	+33	+49	+41	+2
44%	34%	34%	68%	61%	61%	59%	52%	43%
SS	DTC	CWT	EMA	Rib Fat	Rump	RBV	IMF	
+1.2	-0.1	+30	+4.0	-0.6	-0.7	+1.2	+0.5	
50%	32%	46%	46%	49%	49%	44%	39%	

Shorthorn Group Breed Averages for 2014 Born Calves

DIR	DTRS	GL	Birth	200W	400W	600W	MatW	Milk	SS	DTC	CWT	EMA	Rib Fat	Rump	RBV	IMF
0.4	0.6	-1.5	3.1	26	36	48	42	6	1.4	-1	32	4.1	-0.5	-0.6	1	+5



